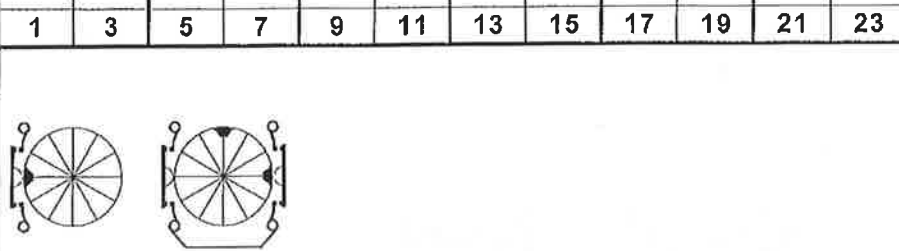
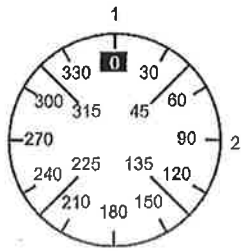


**Face Plate**



Switching Angle   
Total switching Angle

		1	3	5	7	9	11	13	15	17	19	21	23
	2	4	6	8	10	12	14	16	18	20	22	24	
1	0	█			█								
	15												
	30												
	45												
	60												
	75												
2	90			█									
	105												
	120												
	135												
	150												
	165												
	180												
	195												
	210												
	225												
	240												
	255												
	270												
	285												
	300												
	315												
	330												
	345												

Look	601	Pcs.	Optional Extras	Jumpers			
Mounting	E	1	S00 L802	10	03	40	02
Face Plate	----			50	07	80	06
Handle	G251			90	011	120	010
Latch. Mech.	E204			130	015	160	014
Stop	S00.E101.14			170	019	200	018
Stop degree				210	023	240	022
No. of Stages	2			250	027	280	026
Master data	1			290	031	320	030
Reference	GAMMON			330	035	360	034
Date	2013-05-28 02:11			370	039	400	038
Modify Date	2013-05-30 22:04			410	043	440	042
Cust. NO.	M0041			450	047	480	046
Company	MAD						
Version	2						